



# DOGON | GROUP

PROPERTIES

## MEDBURN VILLAS FINISHING SCHEDULE



HEAD OFFICE **021 433 2580**

**dogongroup.com**

*A visionary company with decades of experience*



# DOGON | GROUP

## PROPERTIES

### COMPANY PARTICULARS

Established in 2002 and founded by Denise Dogon, Dogon Group Properties has proven to be a true real estate success story. The Dogon name has become synonymous with the proficient and effective marketing and selling of premium grade properties in Cape Town and particularly the sought-after Atlantic Seaboard. Dogon Group currently have offices in high profile positions in Sea Point and Southern Suburbs.

Dogon Group Properties prides itself on its unique and focused approach to marketing and sales, providing a comprehensive and tailored solution to ensure that sales occur at the optimum price within a compressed space of time. The company utilizes an evolved and distinctive sales force of highly adept and skilled sales agents who are selected for their extensive experience, professionalism and successful track records.

Headed by Managing Director Alexa Horne, Dogon Group has a dedicated in-house marketing department ensuring that focused and specialized marketing strategies are implemented. The powerful proprietary Dogon Group database combined with its eye-catching and prominent advertising, both in print and digital media, together with our visible network of sales offices support our strong performance on the Western Cape's Atlantic Seaboard, Southern Suburbs, Western Seaboard and surrounding areas.

DOGON GROUP PROPERTIES (PTY) LTD  
REGISTRATION NO: 2002/020365/07  
FIDELITY FUND CERTIFICATE NO: F110941  
ALEXA HORNE (MANAGING DIRECTOR)

P O BOX 605 SEA POINT 8060  
THE KINGS, 101 REGENT ROAD  
SEA POINT, SOUTH AFRICA  
TEL +27 21 433 2580  
FAX +27 21 433 2781

### SALES AGENT



PAUL UPTON  
**071 610 8088**  
paul@dogongroup.com  
FFC: 0525859

HEAD OFFICE **021 433 2580**

**dogongroup.com**

*A visionary company with decades of experience*



**FINISHES SPECIFICATION**  
33 MEDBURN ROAD, CAMPS BAY

**INDEX**

1. EXTERNAL FINISHES
2. FLOOR FINISHES
3. INTERNAL WALL FINISHES
4. INTERIOR FIT OUT
5. KITCHEN APPLIANCES
6. SANITARY WARE

**1. EXTERNAL FINISHES**

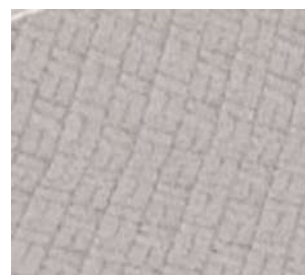
**1.1 PACKED STONE**

AREA: EXTERIOR FEATURE WALLS & CHIMNEYS  
PRODUCT SPEC: STONE PACK  
SIZE: N/A  
FINISH: COLOUR GREY  
NOTE: ELEVATIONS REPRESENT EXTENT OF STONE



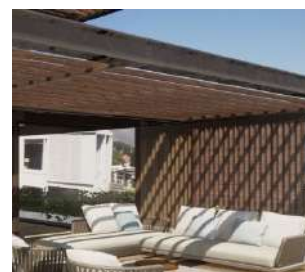
**1.2 ROUGH AGGREGATE PAVING**

AREA: DRIVEWAY  
PRODUCT SPEC: BRICKS  
SIZE: N/A  
NOTE: TO BE LAID DIAGONALLY



**1.3 TIMBER PERGOLA & SCREENS**

AREA: BALCONIES & PATIOS  
PRODUCT SPEC: ENVIRODECK  
SIZE: VARIOUS PLANK SIZES  
FINISH: GREY TIMBER  
NOTE: COATING TO BE SPECIFIED



**1.4 EXTERIOR ENTRANCE FLOOR TILE**

AREA: DRIVEWAY  
PRODUCT SPEC: EXTERNAL NON-SLIP TILE  
SIZE: 1200mm x 600mm  
COLOUR: GREY  
NOTE: GROUTING COLOUR TO MATCH



**1. EXTERNAL FINISHES**

**1.5 GARAGE DOORS**

AREA: GARAGE  
PRODUCT SPEC: TIMBER SECTIONAL OVERHEAD  
SIZE: 2.8m & 4.8m WIDTH  
FINISH: BLACK STAIN & OILED GARAGE DOOR  
(WITH HORIZONTAL GROOVES)  
NOTE: AUTOMATED



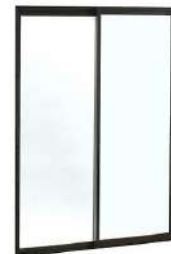
**1.6 LASER CUT GATE**

AREA: MAIN VEHICULAR GATE & PEDESTRIAN GATE  
PRODUCT SPEC: ALUMINIUM LASER CUT SCREEN  
SIZE: VARIOUS SIZES RECTANGULAR CUT OUTS  
FINISH: POWDER COATED OR ANODIZED



**1.7 ALUMINIUM SLIDING DOORS & WINDOWS (DOUBLE GLAZED)**

AREA: LIVING ROOM, DINING, KITCHEN, BEDROOMS, PJ LOUNGE  
PRODUCT SPEC: HBS NUNKLIP GALAXY SLIDING SYSTEM  
SIZE: 2.4m U/S LINTEL HEIGHT, 120mm WIDE DOOR FRAME  
FINISH: COLOUR CHARCOAL, DARK UMBER GREY ANP 3057  
NOTE: INCLUDES POSTBOX FLUSH PULL HANDLE & LOCKSET



**1.8 STEEL COLUMNS (PERGOLA)**

AREA: OUTDOOR BALCONY & PATIO  
PRODUCT SPEC: SQUARE STEEL  
COLUMNS COLOUR: CHARCOAL  
FINISH: STEEL TO BE COATED



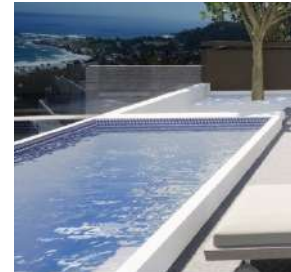
**1. EXTERNAL FINISHES**

**1.9 SWIMMING POOL**

AREA: BALCONY & TERRACE

PRODUCT SPEC: FIBRELINE POOL

NOTE: OPTIONAL POOL HEATING SYSTEMS BY PURCHASER



**1.10 PLASTER & PAINT**

AREA: OUTDOOR FRAMES/EYE-LASHES PRODUCT

SPEC: PLASTER AND COATING MARMORAN OR SIMILAR

COLOUR: REFER TO ARCHITECTURAL GUIDELINES

NOTE: REFER TO ELEVATIONS FOR EXTENT OF PAINT



**1.11 PLASTER & PAINT**

AREA: OUTDOOR WALLS

PRODUCT SPEC: PLASTER AND PAINT

COLOUR: REFER TO ARCHITECTURAL GUIDELINES

NOTE: REFER TO ELEVATIONS FOR EXTENT OF PAINT



**1.1 GLASS BALUSTRADES**

AREA: BALCONIES, SLIDING DOORS (WHERE INDICATED)

PRODUCT SPEC: 12-15 mm STRUCTURAL FRAMELESS GLASS

SIZE: 1m HIGH BALUSTRADE+

NOTE:



**2. FLOOR FINISHES**

2.1 INTERNAL FLOOR TILE

AREA: BATHROOMS  
PRODUCT SPEC: WHITE PORCELAIN TILE WITH GRAIN  
SIZE: 1200mm x 600mm  
NOTE: SUPPLIER TO PURCHASER'S SELECTION



---

2.2 BATHROOM SHOWER FLOOR TILE

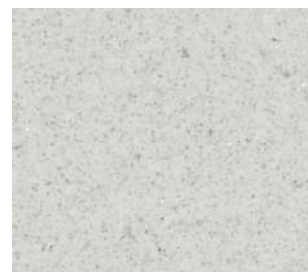
AREA: BATHROOMS  
PRODUCT SPEC: WHITE PORCELAIN TILE WITH GRAIN  
SIZE: 1200mm x 600mm  
NOTE: SUPPLIER TO PURCHASER'S SELECTION



---

2.3 EXTERIOR BALCONY FLOOR TILE

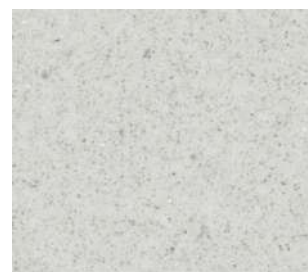
AREA: BALCONIES  
PRODUCT SPEC: EXTERNAL NON-SLIP TILE  
SIZE: 1200mm x 600mm  
COLOUR: GREY  
NOTE: GROUTING COLOUR TO MATCH



---

2.4 EXTERIOR PATIO FLOOR TILE

AREA: PATIOS  
PRODUCT SPEC: EXTERNAL NON-SLIP TILE  
SIZE: 1200mm x 600mm  
COLOUR: GREY  
NOTE: GROUTING COLOUR TO MATCH



**2. FLOOR FINISHES**

2.5 GARAGE FLOOR FINISH

AREA: GARAGE

PRODUCT SPEC: EXTERNAL NON-SLIP TILE SIZE: 1200 x 600 mm

COLOUR: GREY

NOTE: GROUTING COLOUR TO MATCH



---

2.6 TIMBER FLOORING

AREA: LIVING ROOM, DINING, KITCHEN, BEDROOMS

PRODUCT SPEC: OAK

NOTE: HERRINGBONE PATTERN



---

2.7 SKIRTINGS

AREA: LIVING ROOM, DINING, KITCHEN, BEDROOMS, LOUNGE

PRODUCT SPEC: PAINTED HARDWOOD

SIZE: 100mm x 22mm HIGH SKIRTING

STRIP COLOUR: TO SPECIFICATION





**3. INTERNAL WALL FINISHES**

**3.1 WALL TILES**

AREA: KITCHEN & SCULLERY  
PRODUCT SPEC: WHITE PORCELAIN TILE WITH  
GRAIN SIZE: 1200mm x 600mm  
NOTE: SUPPLIER TO PURCHASER'S SELECTION



---

**3.2 WALL TILES**

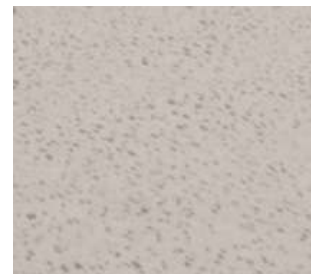
AREA: BATHROOMS  
PRODUCT SPEC: WHITE PORCELAIN TILE WITH  
GRAIN SIZE: 1200mm x 600mm  
NOTE: SUPPLIER TO PURCHASER'S SELECTION



---

**3.3 PLASTER & PAINT (SWIMMING POOL EDGE)**

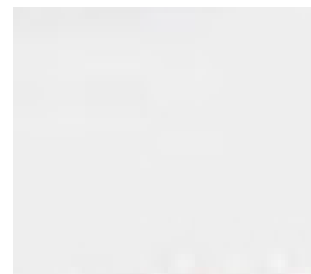
AREA: POOLS  
PRODUCT SPEC: EXTERNAL NON-SLIP TILE SIZE: 1200 x 600  
COLOUR: GREY  
NOTE: GROUTING COLOUR TO MATCH



---

**3.4 PLASTER & PAINT**

AREA: INTERNAL SPACES  
PRODUCT SPEC: PLASTER AND PAINT  
COLOUR: REFER TO ARCHITECTURAL GUIDELINES  
NOTE: REFER TO ELEVATIONS FOR EXTENT OF  
PAINT



**3. INTERNAL WALL FINISHES**

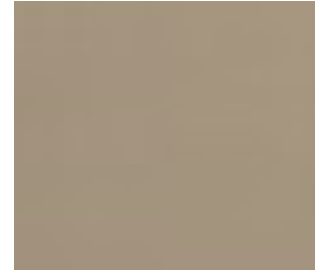
3.5 1 x FEATURE WALL (PAINT)

AREA: BEDROOM

PRODUCT SPEC: PLASTER AND PAINT

COLOUR: REFER TO ARCHITECTURAL GUIDELINES

NOTE: REFER TO ELEVATIONS FOR EXTENT OF PAINT



3.6 1 x FEATURE WALL (TIMBER)

AREA: TVLOUNGE

PRODUCT SPEC: DUCO OR OAK VENEER

SIZE: TO BE CONFIRMED

COLOUR: DUCO COLOUR TO THE PURCHASER'S SELECTION

NOTE: ENGINEERED OAK STAINED TO LATER DETAIL



3.7 1 x FEATURE WALLPAPER (BEDROOMS & LOUNGE)

AREA: BEDROOMS

PRODUCT SPEC: AS PER CLIENT'S SELECTION

SIZE:



3.8 1 x FEATURE EXTERIOR WALL

AREA: DIVIDING WALLS AND BRAAI AREAS

PRODUCT SPEC: OFF SHUTTER CONCRETE

SIZE:

NOTE: SUPPLIER TO PURCHASER'S SELECTION



**4. INTERIOR FIT OUT**

**4.1 INTERIOR CEILINGS**

AREA: INTERIOR SPACES  
PRODUCT SPEC: SKIMMED & PLASTER GYPSUM BOARD  
COLOUR: WHITE  
NOTE: SHADOW TRIM ALONG ALL CEILING EDGES



**4.2 LIGHT FITTINGS (FEATURE)**

AREA: ABOVE DINING TABLE & BEDROOM  
PRODUCT SPEC:  
SIZE: TO FIT WITHIN ALLOWANCE  
NOTE: ALL PENDANTS & WALL LIGHTS TO BE FINALISED



**4.3 INTERNAL DOOR FRAMES**

AREA: ALL INTERIOR DOORS  
PRODUCT SPEC: OAK VENEER DOORS  
FINISH: OAK DOOR LININGS



**4.4 INTERNAL DOOR IRONMONGERY**

AREA: ALL INTERIOR DOORS, EXCLUDING ALUMINIUM SLIDING DOORS  
PRODUCT SPEC: TO PURCHASER'S SELECTION  
NOTE: PER DOOR FOR LOCKSET, HINGES, HANDLES, AND DOOR STOP



**4. INTERIOR FIT OUT**

4.5 INTERIOR JOINERY (BEDROOMS)

AREA: BEDROOMS

PRODUCT SPEC: DUCO OR OAK VENEER

SIZE: TO BE CONFIRMED

FINISH: DUCO COLOUR TO THE PURCHASER'S SELECTION

NOTE: ENGINEERED OAK STAINED TO LATER DETAIL



---

4.6 INTERIOR JOINERY (TOP & BOTTOM CUPBOARDS)

AREA: KITCHENS

PRODUCT SPEC: DUCO AND STAINED

SIZE: TO BE CONFIRMED

FINISH: DUCO COLOUR TO THE PURCHASER'S SELECTION

NOTE: ENGINEERED OAK STAINED TO LATER DETAIL



---

4.7 COUNTER TOP (KITCHEN)

AREA: KITCHEN

PRODUCT SPEC: WHITE PORCELAIN WITH GRAIN



**4. INTERIOR FIT OUT**

4.8 INTERIOR JOINERY (VANITIES)

AREA: BATHROOMS PRODUCT

SPEC: OAK VENEER

SIZE: TO BE CONFIRMED

FINISH: COLOUR TO THE PURCHASER'S SELECTION NOTE:  
ENGINEERED OAK STAINED TO LATER DETAIL



---

4.9 ELECTRICAL SWITCHGEAR & LIGHTING CONTROL

AREA: INTERIOR SPACES & PATIO

PRODUCT SPEC: LE GRAND ARTEOR RANGE WITH COVERS

COLOUR: BLACK OR WHITE

NOTE: PURCHASER'S REQUIREMENTS TO BE CONFIRMED



---

4.10 HEATING & COOLING (TO BE CONFIRMED)

AREA: LIVING ROOM AND BEDROOMS

PRODUCT SPEC: AIR CONDITIONING UNITS

NOTE: SPLIT UNIT AIR CONDITIONING

NOTE: TO SPECIALIST'S DETAIL



**5. KITCHEN APPLIANCES**

5.1 OVEN

AREA: KITCHEN

PRODUCT SPEC: SIEMENS 90cm BUILT-IN ELECTRIC OVEN

SIZE: 896mm x 594mm x 570mm

FINISH: STAINLESS STEEL WITH BLACK FRONT

SUPPLIER: SIEMENS



(VB554DFR0)

5.2 HOB

AREA: KITCHEN

PRODUCT SPEC: SIEMENS 90cm GAS CERAMIC HOB

SIZE: 912mm x 520mm

FINISH: CERAMIC TOP SHEET WITH CAST IRON PAN SUPPORT

SUPPLIER: SIEMENS



(ER9A6SD70Z)

5.3 EXTRACTOR FAN

AREA: KITCHEN

PRODUCT SPEC: SIEMENS ISLAND CHIMNEY HOOD

SIZE: 898mm x 600mm

FINISH: STAINLESS STEEL

SUPPLIER: SIEMENS



(LF97BBM50)

5.4 INTEGRATED MICROWAVE

AREA: KITCHEN

PRODUCT SPEC: SIEMENS COMPACT MICROWAVE & OVEN

SIZE: 594mm x 455mm x 548mm

FINISH: STAINLESS STEEL WITH BLACK FRONT

SUPPLIER: SIEMENS



(ET375FFP1E)

**6. SANITARY WARE**

6.1 BASIN

AREA: ALL BATHROOMS

PRODUCT SPEC: CULTURED MARBEL BASINS ON VANITIES

SIZE:

FINISH: WHITE

SUPPLIER:



---

6.2 BASIN MIXER

AREA: ALL BATHROOMS

PRODUCT SPEC: TALIS 190 BASIN MIXER (HANSGROHE)

SIZE: 154mm x 46mm x 332mm

FINISH: CHROME

SUPPLIER: ON TAP PLUMBING & BATHROOMS



---

6.3 BATH

AREA: MASTER BATHROOM & UNIT 1 BATHROOM 2

PRODUCT SPEC: LIVINGSTONE BATHS CHARLOTTE FREE STANDING

SIZE: 1600mm x 735mm x 530mm

FINISH: WHITE (POLISHED OR MATT TO BE CONFIRMED)

SUPPLIER: ON TAP PLUMBING & BATHROOMS



---

6.4 BATH MIXER

AREA: MASTER BATHROOM & UNIT 1 BATHROOM 2

PRODUCT SPEC: TALIS S BATH MIXER HANSGROHE

SIZE: 120mm x 150mm x 150mm

FINISH: CHROME

SUPPLIER: ON TAP PLUMBING & BATHROOMS



## 6. SANITARY WARE

### 6.5 BATH SPOUT

AREA: MASTER BATHROOM & UNIT 1 BATHROOM 2

PRODUCT SPEC: GIO PLUMBING WALL SPOUT

SIZE: 185mm x 25mm

FINISH: CHROME

SUPPLIER: ON TAP PLUMBING & BATHROOMS



### 6.6 SHOWER HEAD

AREA: ALL BATHROOMS

PRODUCT SPEC: LA GIO BELLA ROUND ROSE

SIZE: 250mm DIAMETER

FINISH: STAINLESS STEEL

SUPPLIER: ON TAP PLUMBING & BATHROOMS



### 6.7 SHOWER ARM

AREA: ALL BATHROOMS

PRODUCT SPEC: LA GIO BELLA CEILING SHOWER ARM

SIZE: 24mm x 150mm

FINISH: CHROME

SUPPLIER: ON TAP PLUMBING & BATHROOMS



### 6.8 SHOWER MIXER

AREA: ALL BATHROOMS

PRODUCT SPEC: TALIS S BATH MIXER HANSGROHE

SIZE: 120mm x 150mm x 150mm

FINISH: CHROME

SUPPLIER: ON TAP PLUMBING & BATHROOMS





**6. SANITARY WARE**

6.9 ACTUATOR PLATE

AREA: ALL BATHROOMS

PRODUCT SPEC: ALPHA 15 DUAL FLUSH GEBERIT

SIZE: 213mm x 16mm x 142mm

FINISH: BRIGHT CHROME

SUPPLIER: ON TAP PLUMBING & BATHROOMS



---

6.10 TOILET

AREA: ALL BATHROOMS

PRODUCT SPEC: D-NEO WALL MOUNTED TOILET DURAVIT

SIZE: 540mm

FINISH: WHITE HIGH GLOSS

SUPPLIER: ON TAP PLUMBING & BATHROOMS



---

6.11 KITCHEN MIXER (PREP BOWL)

AREA: SCULLERY

PRODUCT SPEC: DÉCOR KITCHEN MIXER 260 SWIVEL SPOUT HANSGROHE

SIZE: 237mm x 104mm x 338mm

FINISH: CHROME

SUPPLIER: ON TAP PLUMBING & BATHROOMS



---

6.12 SINK (DOUBLE)

AREA: SCULLERY

PRODUCT SPEC: SELENE SLX110-40 UNDERSLUNG SINK FRANKE

SIZE: 428mm x 428mm x 190mm

FINISH: CHROME

SUPPLIER: ON TAP PLUMBING & BATHROOMS



**6. SANITARY WARE**

6.13 SINK MIXER

AREA: KITCHEN

PRODUCT SPEC: DÉCOR KITCHEN MIXER PULL-ROD-OUT HANSGROHE

SIZE: 272mm x 104mm x 411mm

FINISH: CHROME

SUPPLIER: ON TAP PLUMBING & BATHROOMS



---

6.14 PREP BOWL

AREA: KITCHEN

PRODUCT SPEC: SELENE SLX110-40 UNDERSLUNG SINK FRANKE

SIZE: 428mm x 428mm x 190mm

FINISH: CHROME

SUPPLIER: ON TAP PLUMBING & BATHROOMS

